



# LAND FOR SALE

**80+ Acres *(2 Tracts)***

50.93 acre tract (**\$137,495**) + 29.77 acre tract (**\$89,900**)

***Adjacent to Oconee National Forest***

**KEY ASPECTS AND/OR POTENTIAL USES MAY INCLUDE:**

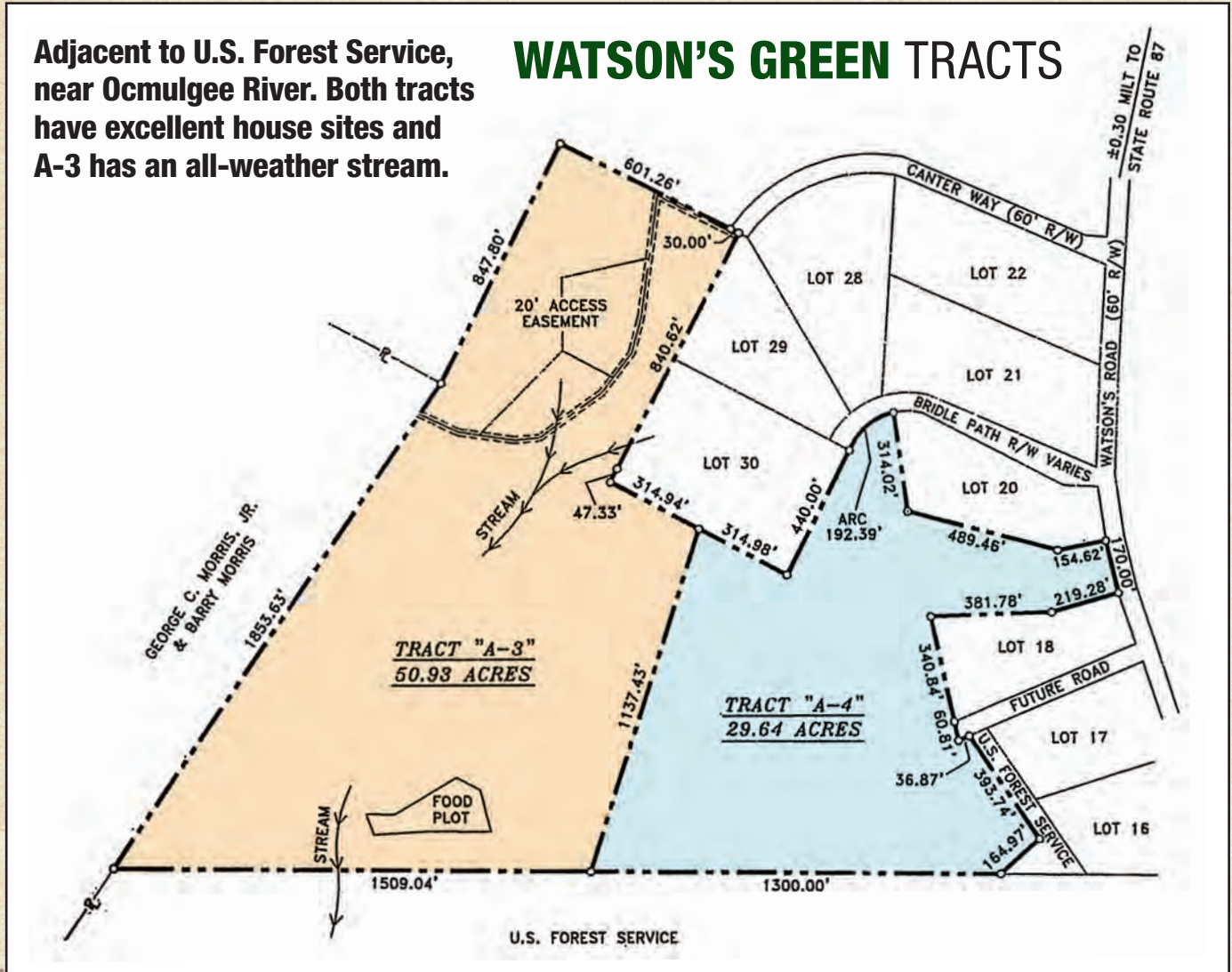
Central Georgia  
30 miles north of Macon  
60 miles south of Atlanta

Prime hunting  
Food plots  
Beautiful creeks, streams

Potential residential use  
Nature trails  
Horseback riding

Adjacent to U.S. Forest Service,  
near Ocmulgee River. Both tracts  
have excellent house sites and  
A-3 has an all-weather stream.

## WATSON'S GREEN TRACTS



### DIRECTIONS:

**FROM JACKSON, GA:** Proceed South from Jackson on Ga. Hwy. 87 approximately 10 miles to intersection of Watson Rd. This intersection is one mile south of Big Sandy Creek, which is the county line between Monroe and Butts Counties. Turn left onto Watson Rd. and proceed approximately 4/10 of a mile. Look for a sign on your right. This is tract "A-4."

To proceed directly to tract "A-3," proceed from Hwy. 87 approximately 1/4 mile on Watson Rd. and turn right on Cantor Way (intersection is marked). Tract "A-3" is at the end of Cantor Way.

**FROM FORSYTH, GA:** Go east on Ga. Hwy. 83 to intersection of Ga. Hwy 87. Go north 1 mile on Hwy. 87 to Watson Rd. Follow Watson Rd. east as described above.

## O'NEAL PROPERTIES

(478) 743-6818 • (478) 973-8940 • giles@onealproperties.com